

# DEBARKERS - MANITOWOC

---

PART #100-040 THRUST WASHER, OEM REFERENCE #713397



PART #100-065 SHOCK BLOCK, OEM REFERENCE #62596-2  
PART #100-065A SHOCK BLOCK

PART #100-066 SHOCK BLOCK WITH CUTOUT, OEM REFERENCE #62595-2



PART #100-070 COUNTER SHAFT, OEM REFERENCE #62146-2

PART #100-071 PISTON SHAFT, 3/4-16 UNF THREAD, OEM REFERENCE #61635-2  
PART #100-071A PISTON SHAFT, 3/4-10 UNC THREAD



PART #100-082 SLEEVE, OEM REFERENCE #61234-2

PART #100-088 PIN, OEM REFERENCE #61626-2  
PART #100-088A PIN, 5" WITH NUT  
PART #100-088B PIN, 5" WITH SPECIAL NUT

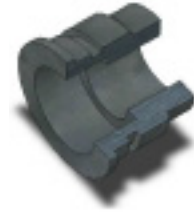


PART #100-091 PISTON, OEM REFERENCE #567110

# DEBARKERS - MANITOWOC

---

PART #100-092 GLAND (SECTION VIEW SHOWN), OEM REFERENCE #466993



---

PART #100-093 PISTON ROD, OEM REFERENCE #567108

---

PART #100-103 BLOCK, SMALL STUD, OEM REFERENCE #665429



---

PART #100-104 BLOCK, LARGE STUD, OEM REFERENCE #665430

---

PART #100-105 CENTER ROLL SHAFT, OEM REFERENCE #26400-2



---

PART #100-106 CHEVRON TEETH, OEM REFERENCE #679746

---

PART #100-107 WEDGE BLOCK (SECTION VIEW SHOWN), OEM REFERENCE #61811-2  
PART #100-107-HT WEDGE BLOCK, HEAT TREATED



---

PART #100-108 ROD EYE, OEM REFERENCE #61829-4

# DEBARKERS - MANITOWOC

---

PART #100-109 SHOCK PIN, OEM REFERENCE #61831-2



PART #100-131 BAFFLE, OEM REFERENCE #28183-4

---

## DEBARKER SHIELDS

PART #100-132 LARGE SHIELD, OEM REFERENCE #28188-4  
PART #100-132A SMALL SHIELD  
PART #100-133 LARGE SHIELD  
PART #100-133A SMALL SHIELD  
PART #100-134 LARGE SHIELD, OEM REFERENCE #28186-4  
PART #100-134A SMALL SHIELD  
PART #100-135 LARGE SHIELD  
PART #100-135A SMALL SHIELD  
PART #100-136 LARGE SHIELD  
PART #100-136A SMALL SHIELD  
PART #100-291 LARGE SHIELD, OEM REFERENCE #28188-4  
PART #100-291A SMALL SHIELD  
PART #100-292 LARGE SHIELD, OEM REFERENCE #28189-4  
PART #100-292A SMALL SHIELD  
PART #100-293 LARGE SHIELD, OEM REFERENCE #28190-4  
PART #100-293A SMALL SHIELD  
PART #100-294 LARGE SHIELD, OEM REFERENCE #28191-4  
PART #100-294A SMALL SHIELD  
PART #100-373 LARGE SHIELD, OEM REFERENCE #61698-2  
PART #100-373A SMALL SHIELD



PART #100-138 DRIVE SHAFT, OEM REFERENCE #45644-2

---

PART #100-140 SHAFT, OEM REFERENCE #26399-2



# DEBARKERS - MANITOWOC

---

PART #100-141 CHEVRON BAR



PART #100-142 WEAR SLEEVE, OEM REFERENCE #61205-2

---

PART #100-145 END CAP COVER, OEM REFERENCE #61232-2



PART #100-146 TOOL PIN, OEM REFERENCE #62654-2  
PART #100-146A TOOL PIN

---



PART #100-149 LINK PIN, OEM REFERENCE #61600-2



PART #100-150 PIN, OEM REFERENCE #61625-2

---

PART #100-151 THRUST WASHER, OEM REFERENCE #61637-2

PART #100-152 THRUST WASHER, OEM REFERENCE #61638-2



PART #100-153 BACK HEAD, OEM REFERENCE #479703

---

# DEBARKERS - MANITOWOC

---

PART #100-154 FRONT HEAD, OEM REFERENCE #479701



---

PART #100-156 FOLLOWER, OEM REFERENCE #434352



---

PART #100-157 GLAND RETAINER (SECTION VIEW SHOWN), OEM REFERENCE #595207



---

PART #100-208 THRUST WASHER, THIN, OEM REFERENCE #225536  
PART #100-209 THRUST WASHER, THICK, OEM REFERENCE #62658-2



---

PART #100-210 WEDGE, OEM REFERENCE #62796-2



---

PART #100-221 PIVOT PIN ASSEMBLY, OEM REFERENCE #62453-2  
PART #100-222 PIVOT PIN ASSEMBLY, OEM REFERENCE #62452-2

---

PART #100-226 WASHER, 2.12" OD X 0.695" ID X .375" THK. , OEM REFERENCE #62688-2



---

PART #100-233 PIVOT PIN

# DEBARKERS - MANITOWOC

---

PART #100-247A NYOIL SPACER BUSHING, 2" OD X 1.506" ID X 1.75" LG.  
PART #100-274B NYOIL SPACER BUSHING, 1.88" OD X 1.506" ID X 1.75" LG.



---

PART #100-248 TOOL ARM SPACER BUSHING, ALUMINUM BRONZE  
PART #100-248A TOOL ARM SPACER BUSHING, PLASTIC  
PART #100-248B TOOL ARM SPACER BUSHING, NYOIL



---

PART #100-264 TOOL PIN



---

PART #100-279 PIVOT PIN



---

PART #100-306 PISTON LINK, LARGE, OEM REFERENCE #61624-2  
PART #100-307 PISTON LINK, SMALL, OEM REFERENCE #61623-2  
PART #100-307A PISTON LINK, SMALL



## CENTERING ROLL BLADES & BODY ASSEMBLIES

PART #100-331 CENTERING ROLL BLADE, SMALL, OEM REFERENCE #26716-2  
PART #100-332 CENTERING ROLL BLADE, LARGE, OEM REFERENCE #26715-2  
PART #100-500 CENTERING ROLL BLADE, LARGE, ROUND TIPS, OEM REF. #28458-C  
PART #100-500A CENTERING ROLL BLADE, LARGE, WEDGE TIPS, OEM REF. #28458-C  
PART #100-501 CENTERING ROLL BLADE, SMALL, ROUND TIPS, OEM REF. #28459-C  
PART #100-501A CENTERING ROLL BLADE, SMALL, WEDGE TIPS, OEM REF. #28459-C  
PART #100-512 CENTERING ROLL BODY, OEM REFERENCE #47255-2  
PART #100-512A CENTERING ROLL BODY ASSEMBLY  
PART #100-514 CENTERING ROLL BODY, OEM REFERENCE #45872-5  
PART #100-560 CENTERING ROLL BODY ASSEMBLY, OEM REFERENCE #47596-2

# DEBARKERS - MANITOWOC

---

- PART #100-359 FEED ROLL ARM LINK, OEM REFERENCE #61582-2
- PART #100-360 CENTERING ROLL ARM LINK, OEM REFERENCE #61583-2



- PART #100-363 STUD BLOCK, TOOL ARM HOUSING, SMALL
- PART #100-364 STUD BLOCK, TOOL ARM HOUSING, LARGE

- PART #100-385 END CAP, CENTERING ROLL, OEM REFERENCE #62600-2
- PART #100-386 END CAP, OUTFEED, OEM REFERENCE #62599-2
- PART #100-387 END CAP, OEM REFERENCE #62652-2



- PART #100-409 LINK PIN, OEM REFERENCE #62614-2

- PART #100-427 TOOL PIN, OEM REFERENCE #62915-2



- PART #100-458 CENTERING ROLL SHAFT, OEM REFERENCE #28161-2
- PART #100-558 CENTERING ROLL SHAFT, OEM REFERENCE #28457-2

- PART #100-473 TOOL ARM HOUSING
- PART #100-479 TOOL ARM
- PART #100-479-HF TOOL ARM, STRESS RELIEVED & HARD FACED
- PART # 100-537 TOOL ARM



- PART #100-476 INFEEED ROLL SHAFT, OEM REFERENCE #26399-2





# DEBARKERS - MANITOWOC

---

PART #100-513 TOOL BIT INSERT HOLDER, OEM REFERENCE #27910-1



PART #100-520 TOOL ARM CLAMP BLOCK ASSEMBLY, 7/8" BOLT, OEM REF. #55066-2  
PART #100-520A TOOL ARM CLAMP BLOCK ASSEMBLY, 1-1/4" BOLT



PART #100-521 TOOL ARM SHAFT, OEM REFERENCE #28453-2



PART #100-541 PISTON SHAFT, OEM REFERENCE #28325-2

PART #100-546 BRONZE SLEEVE BUSHING, OEM REFERENCE #290220



PART #100-547 BRONZE THRUST WASHER, OEM REFERENCE #711003

PART #100-568 BARK DEFLECTOR, LOWER  
PART #100-590 BARK DEFLECTOR, UPPER



PART #100-570 INFEED ROLL ASSEMBLY



## DEBARKERS - MANITOWOC

---

PART #100-582 CENTERING ROLL ARM LINK, 6-1/4" DIA., OEM REFERENCE #62925-2  
PART #100-583 CENTERING ROLL ARM LINK, 24-1/8" DIA.



---

PART #100-621 PISTON PIN, OEM REFERENCE #62926-2

PART #100-622 PISTON LINK PIN, 3", OEM REFERENCE #62956-2  
PART #100-623 PISTON LINK PIN, 3-1/4", OEM REFERENCE #62597-2



---

PART #100-627 DRIVE SHAFT, OEM REFERENCE #47371-2

PART #100-649 STOP BLOCK, BUMPER PAD, OEM REFERENCE #62947-2



---

PART #100-650 HOUSING BUSHING

PART #100-667 TOOL PIN, WITH FLATS



---

PART #100-668 SLEEVE BUSHING, ARM

# DEBARKERS - MANITOWOC

---

PART #100-669 SLEEVE BUSHING, HOUSING



---

PART #100-675 DRIVE SHAFT END PLATE